

# HUSKY GLASS

FOR SLIDING GLASS DOORS UP TO 50kg AND 75kg

## APPLICATIONS

Husky is the ideal solution for lightweight glass applications such as office doors and small glass partitions. Its versatility allows the kit to be face fixed or soffit fixed without compromising on the function of the system.

The nature of these applications require quality aesthetic finishes and to meet this demand, Husky has an additional purpose designed clip on fascia for soffit fixed applications.

## DOOR SPECIFICATION

Maximum door weight	50kg and 75kg
Maximum door height	2400mm
Maximum door width	1250mm
Glass thickness	8mm, 10mm and 12mm

## GEAR SPECIFICATION

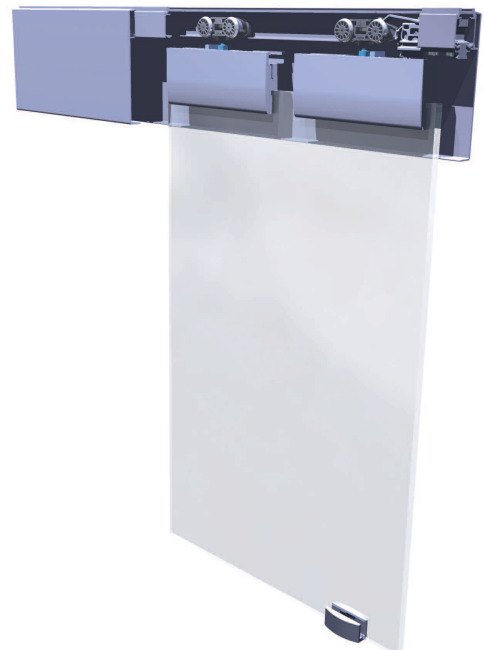
Track	(aluminium, mill finish)	280A	
	(aluminium, anodised finish)	280AN	
Available in 1500, 2000, 2500 and 3000mm lengths			
Brackets	Face fix	281A	
	Jointing and End	281AX	
Fascias	Soffit fixed track (anodised)	F136	
Glass clamp kit	50kg	8mm glass	8/HY/50
		10mm glass	10/HY/50
		12mm glass	12/HY/50
	75kg	8mm glass	8/HY/75
		10mm glass	10/HY/75
		12mm glass	12/HY/75

Kit consists of two hangers, two glass clamps, two 601H retaining stops and an adjustable guide

**Floor guide**  
Brushed stainless steel  
for 8, 10 or 12mm glass 8-12/SN

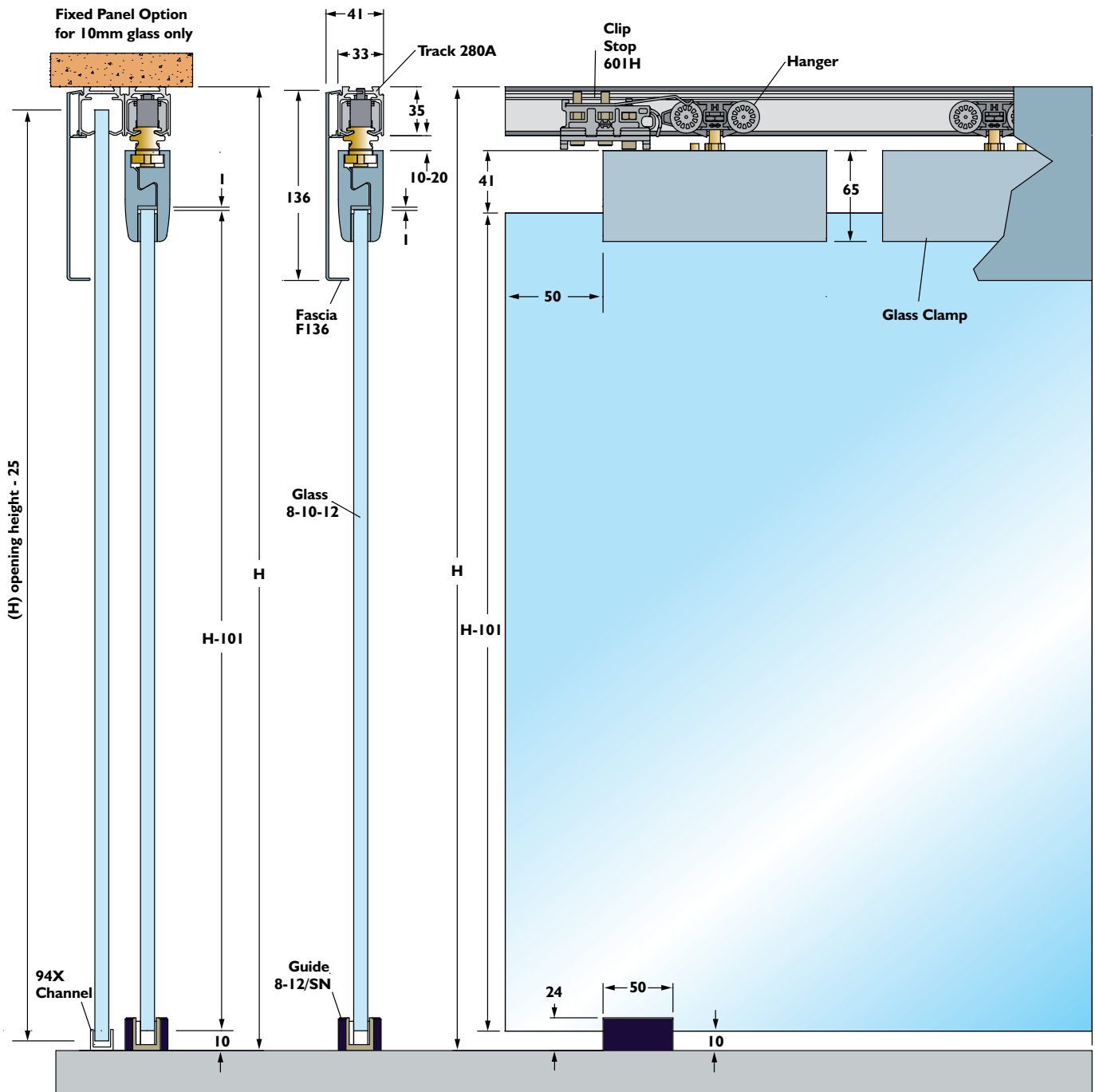
**Accessories**  
See our Glass Door Hardware Systems brochure for further details.

## GLASS DOOR HARDWARE SYSTEM



# HUSKY GLASS

## GLASS DOOR HARDWARE SYSTEM - 50kg and 75kg



REFER TO HUSKY INSTRUCTIONS FOR GENERAL TRACK INSTALLATION DETAILS

**HENDERSON**

P C Henderson Limited, Durham Road, Bowburn, County Durham DH6 5NG, UK. Web: [www.pchenderson.com](http://www.pchenderson.com)  
 UK Customer Services Department: Tel: +44 (0)191 377 7345 Fax: +44 (0)191 377 3116 Email: [sales@pchenderson.com](mailto:sales@pchenderson.com)  
 Export Department: Tel: +44 (0)191 377 7346 Fax: +44 (0)191 377 0755. Email: [international@pchenderson.com](mailto:international@pchenderson.com).  
 For all technical queries email our Technical Department: [technical@pchenderson.com](mailto:technical@pchenderson.com)